

General examine of Female Genital S.

Practical Obstetrics

Dr.Yaseen Mahmood

15-10-2017



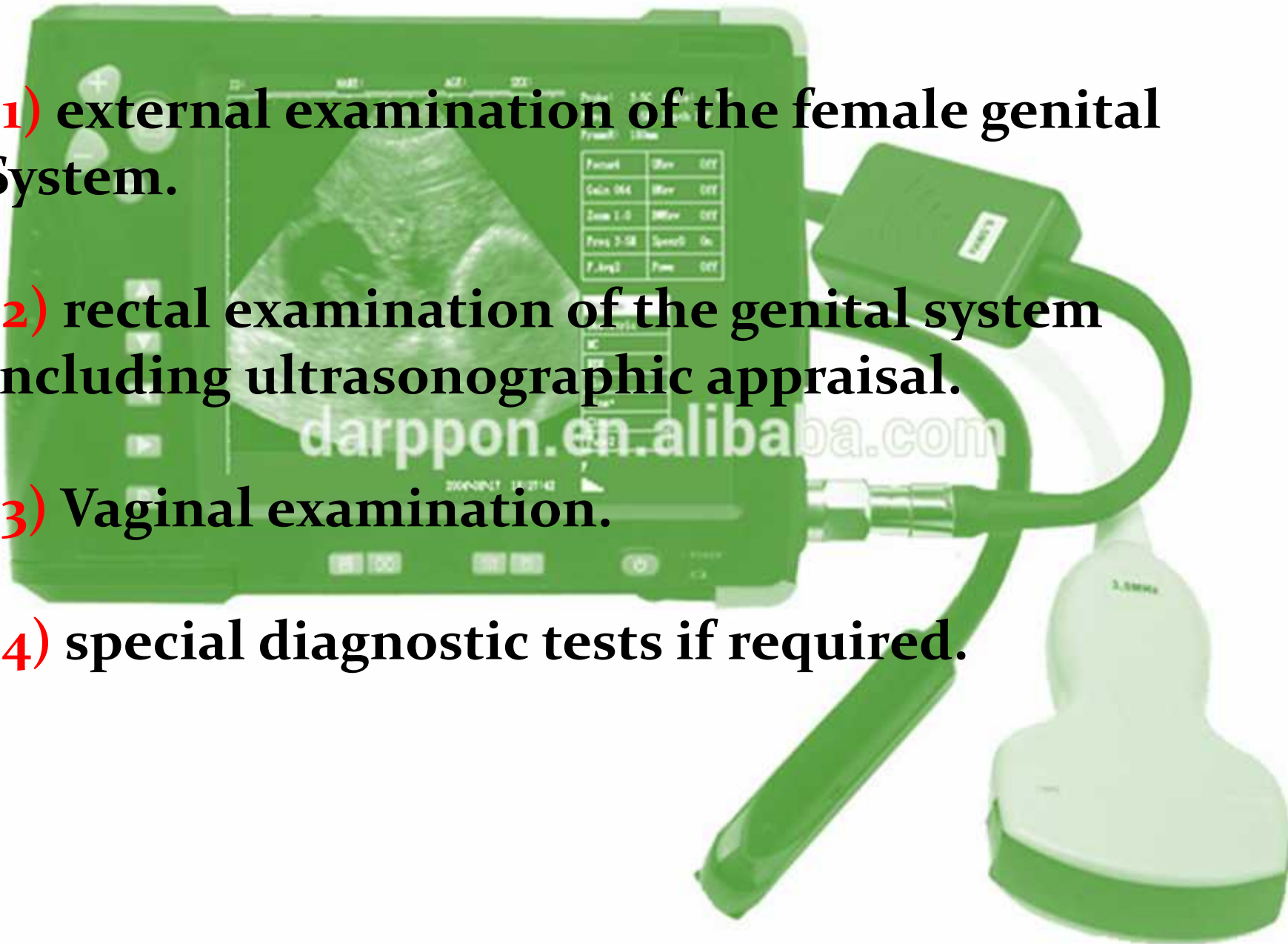
This has the following components:

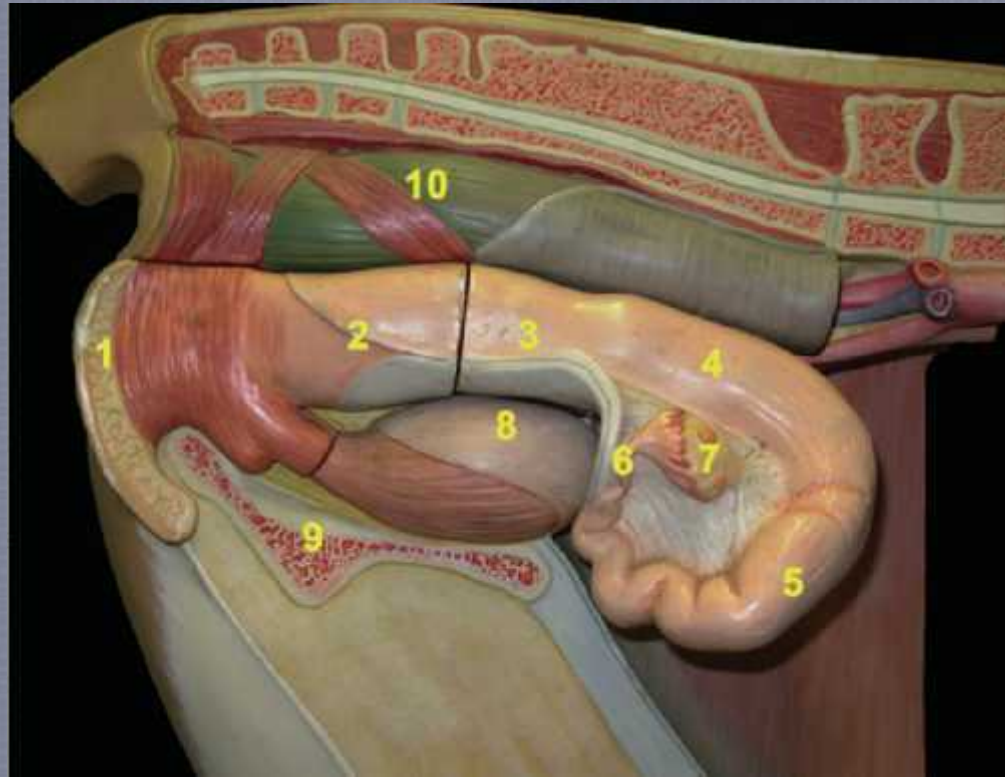
(1) external examination of the female genital System.

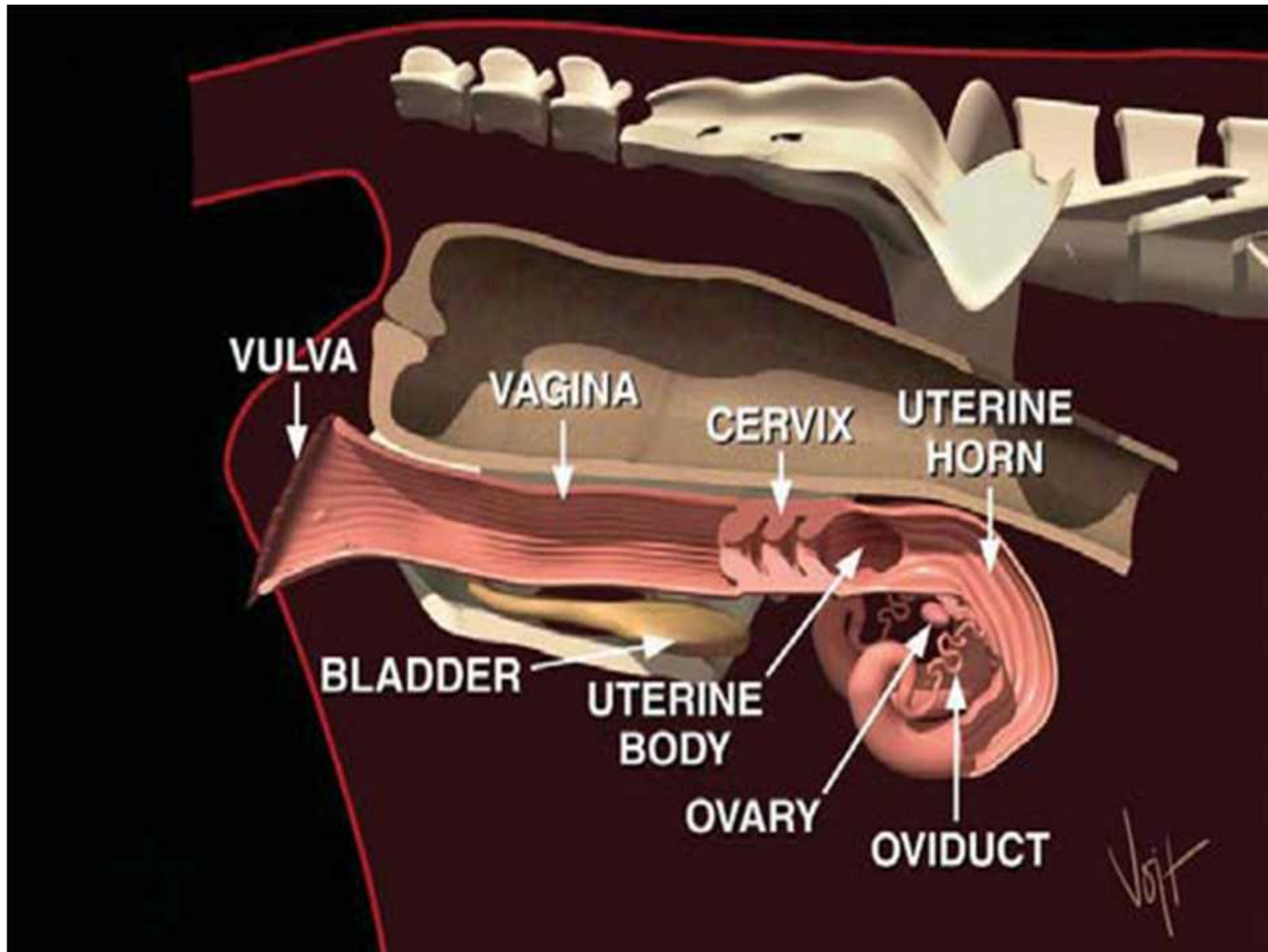
(2) rectal examination of the genital system including ultrasonographic appraisal.

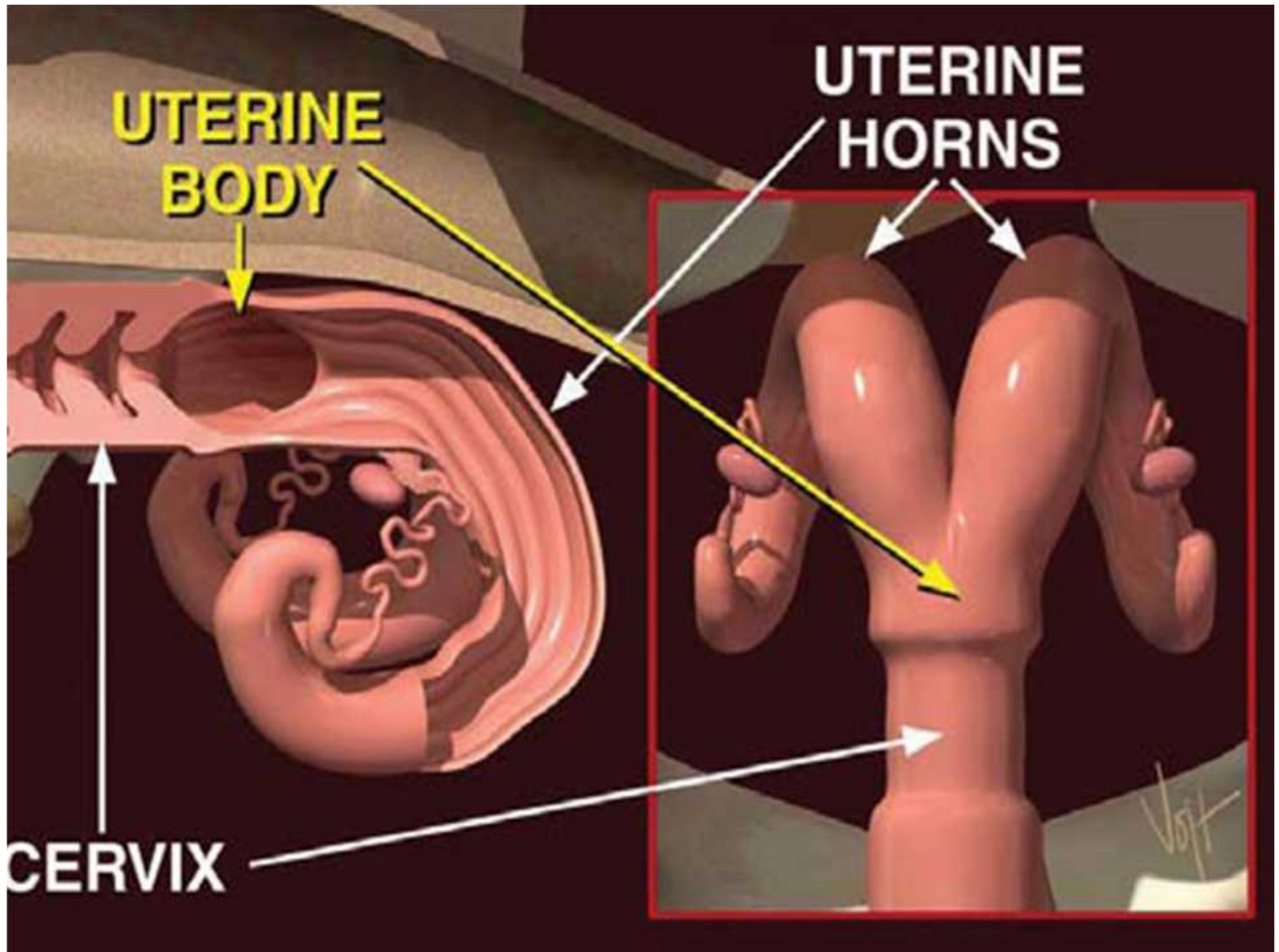
(3) Vaginal examination.

(4) special diagnostic tests if required.

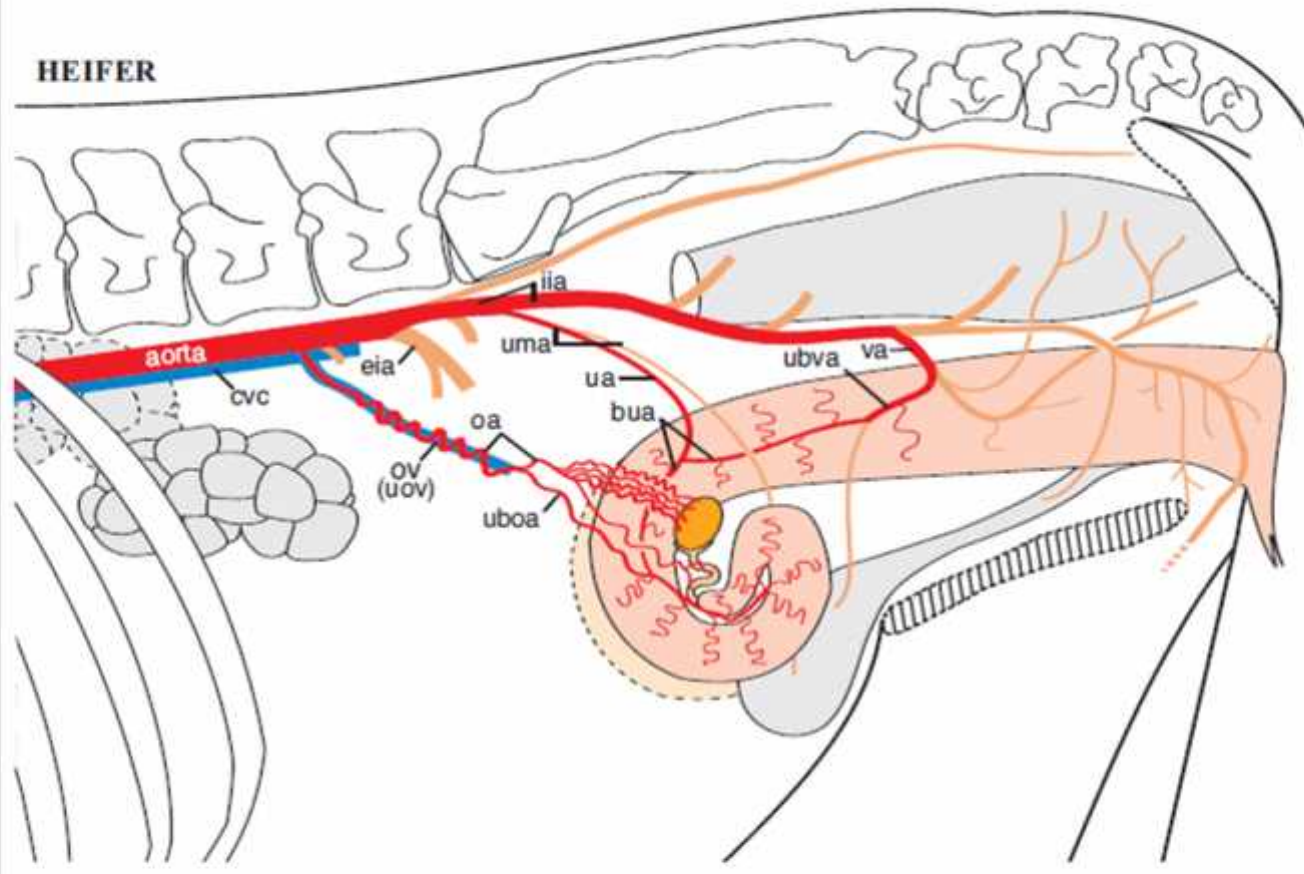


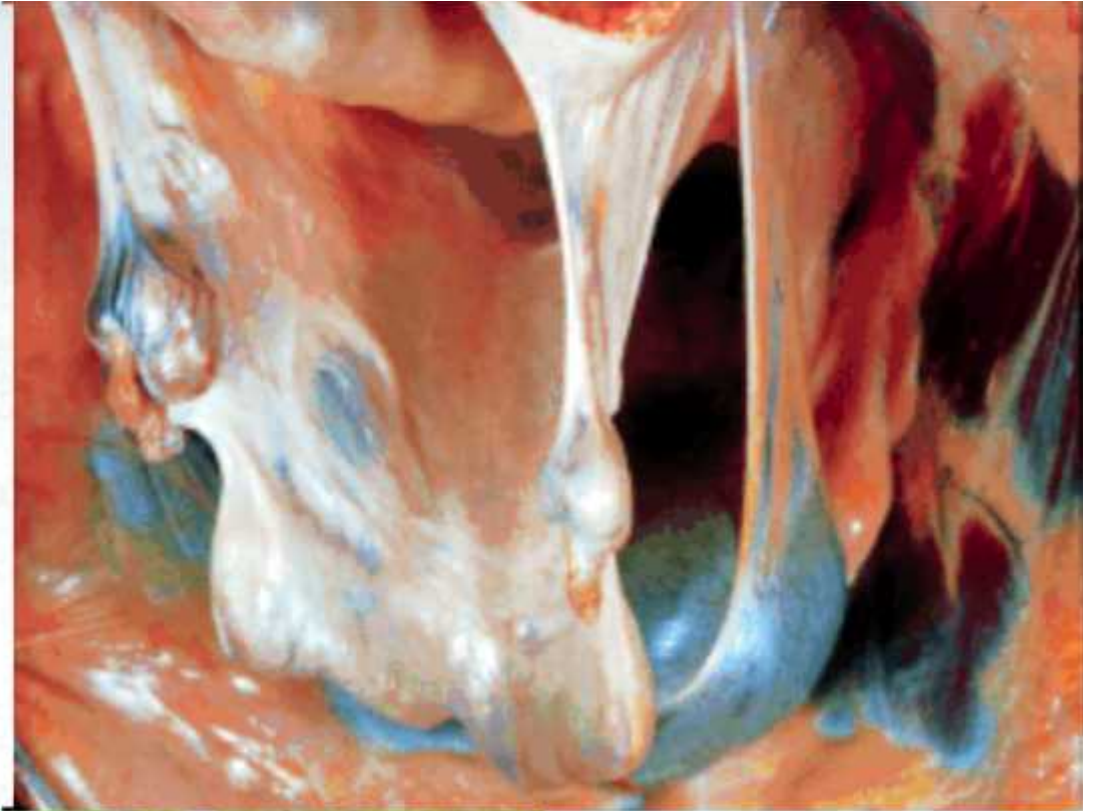
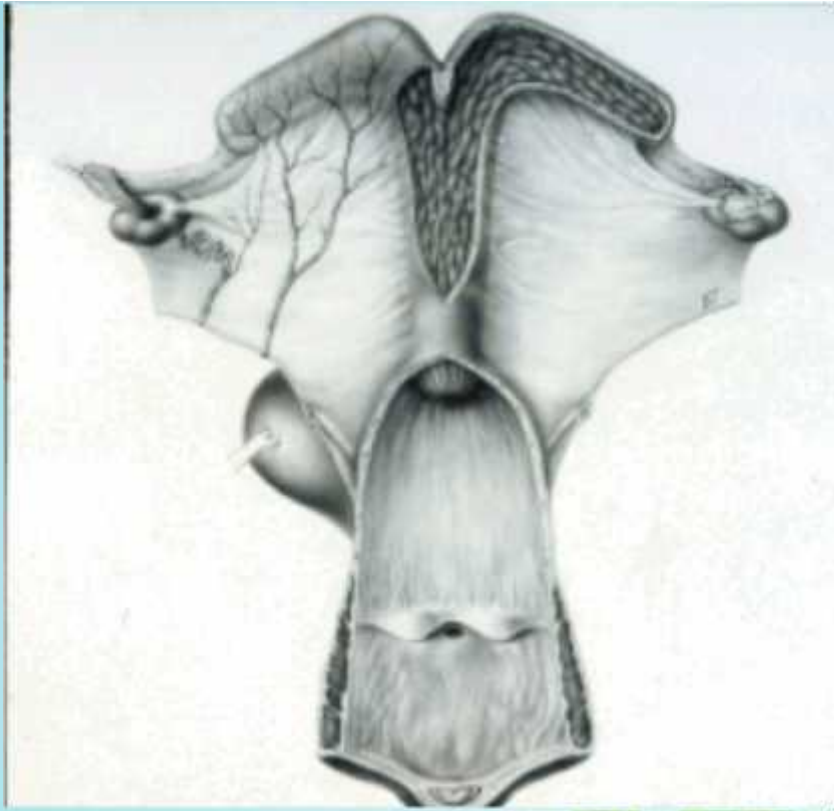






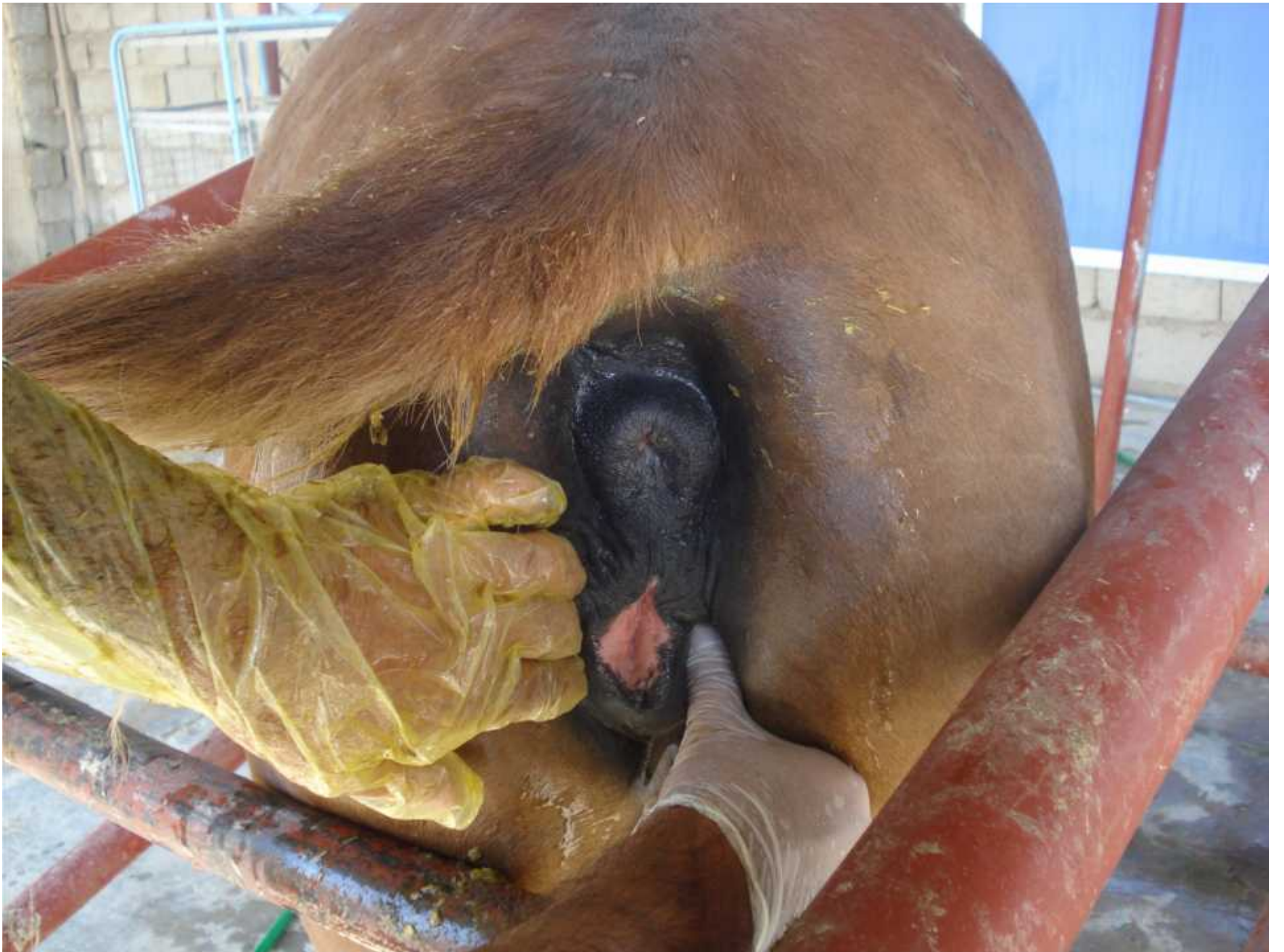
HEIFER







Vulval and/or vaginal discharge – color, quantity and consistency





Vagino-speculum



Vagino-scope



CLINICIAN'S CHECKLIST – RECTAL EXAMINATION

Position of the genital tract

Can the uterus be retracted?

Cervix – position, size and mobility.

Uterus – position and size.

Uterine horns – size, relative size and contents

Signs of pregnancy?

Signs of fetal life?

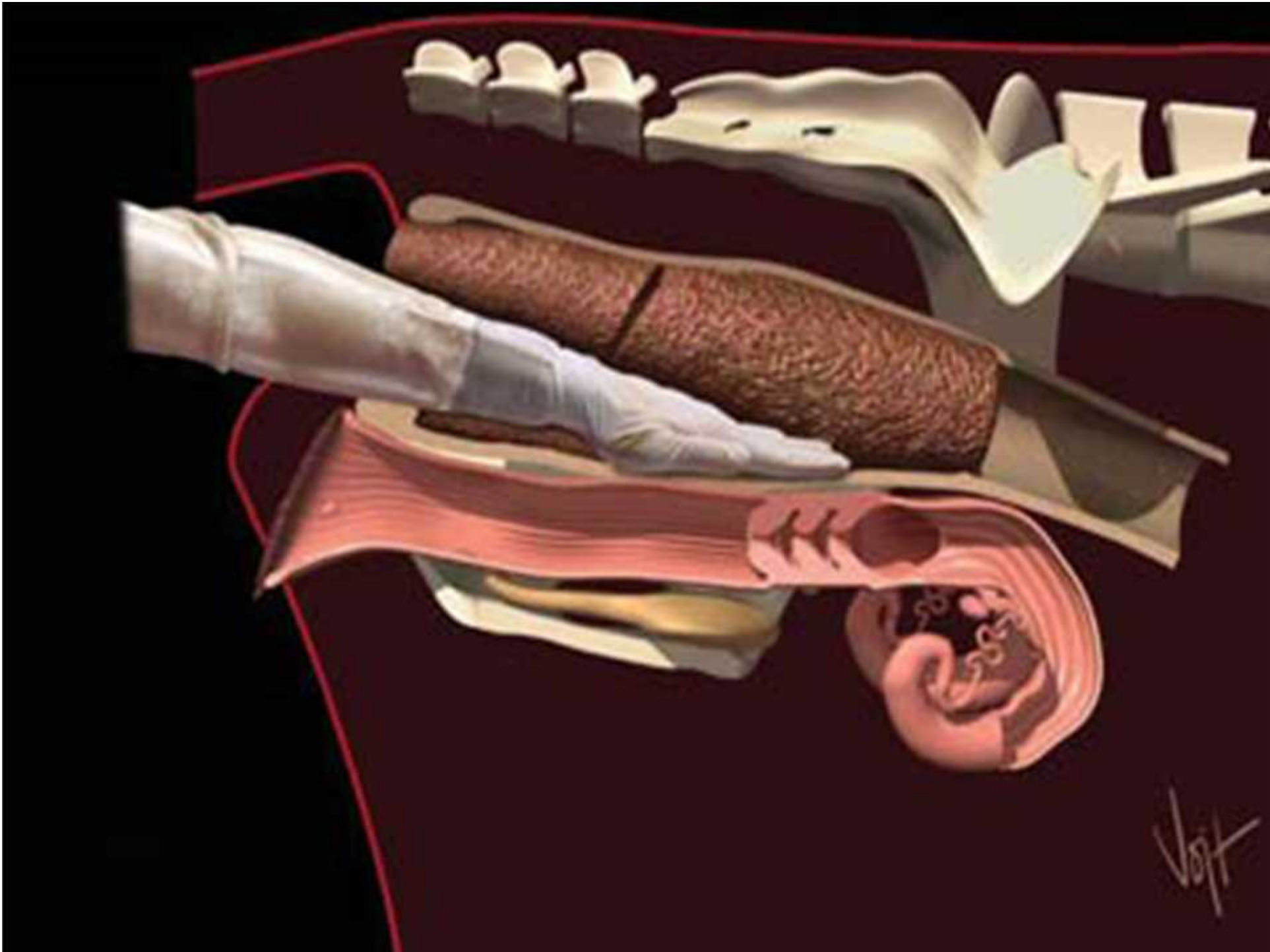
Ovaries – position, size

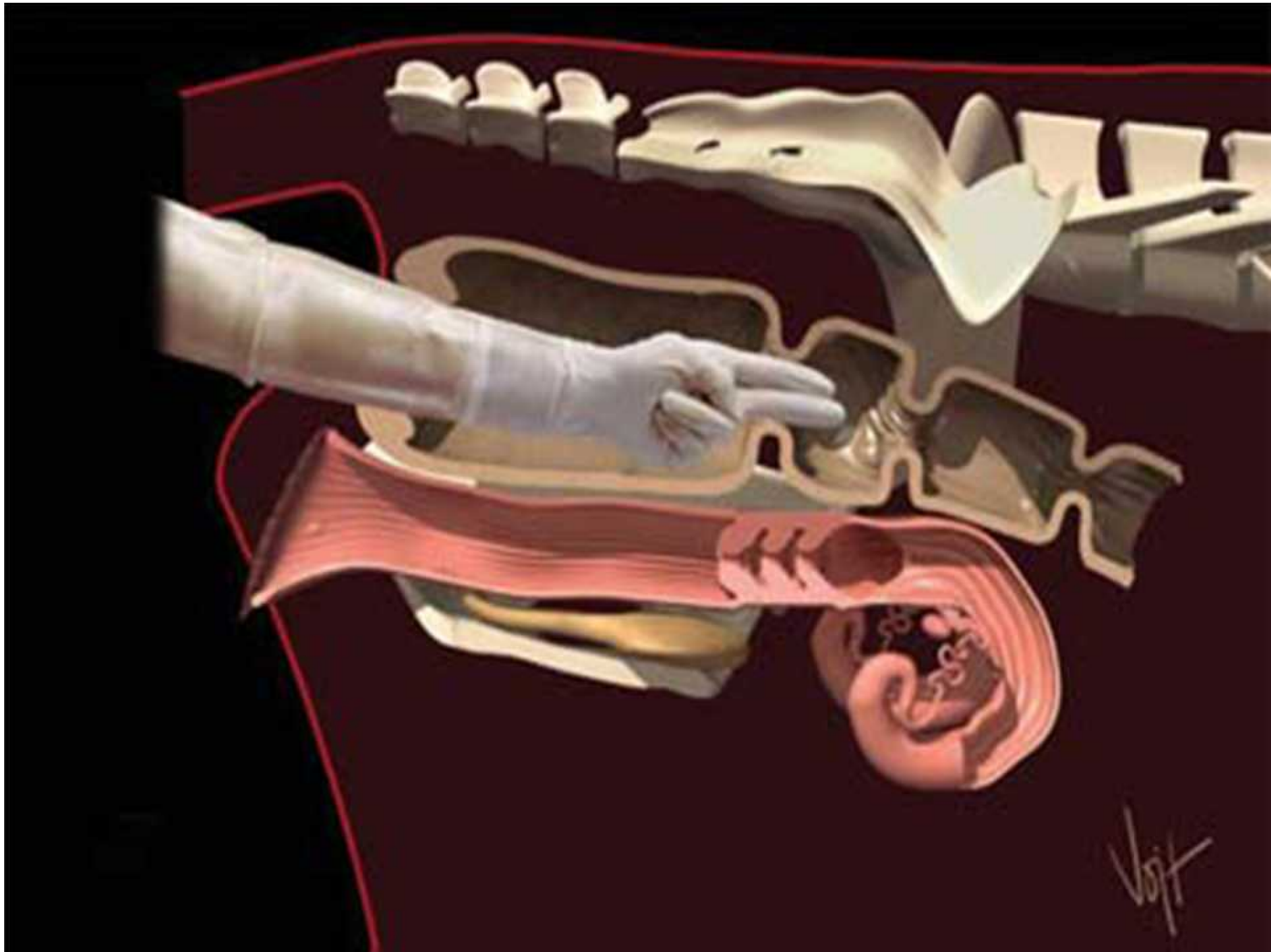
Ovarian follicles – number, size and consistency

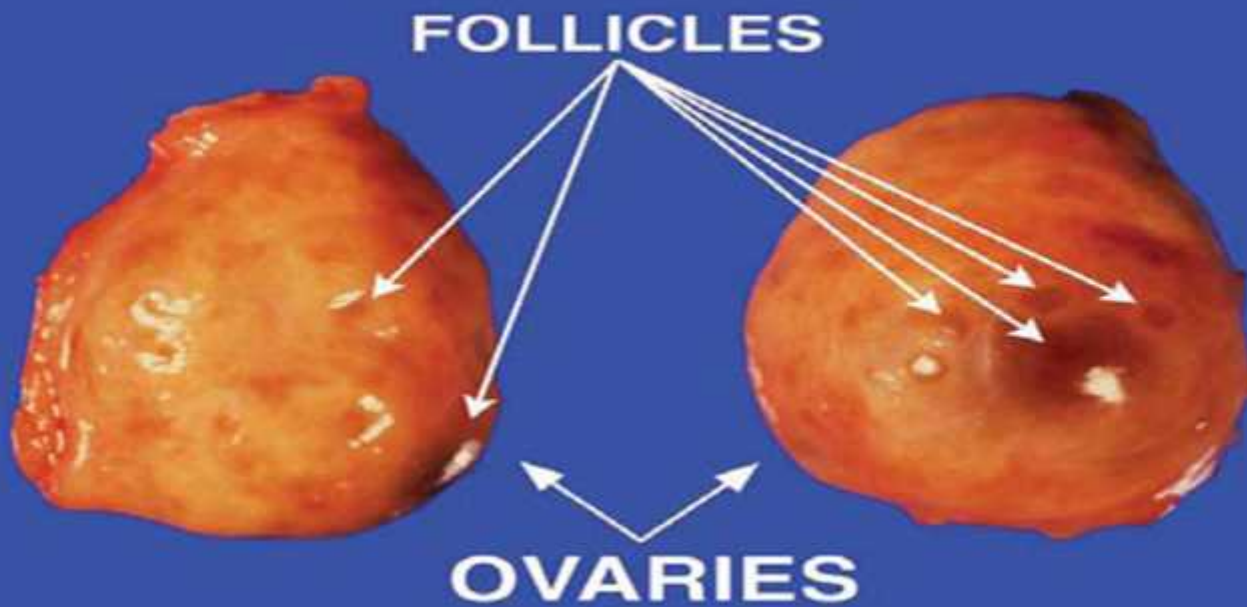
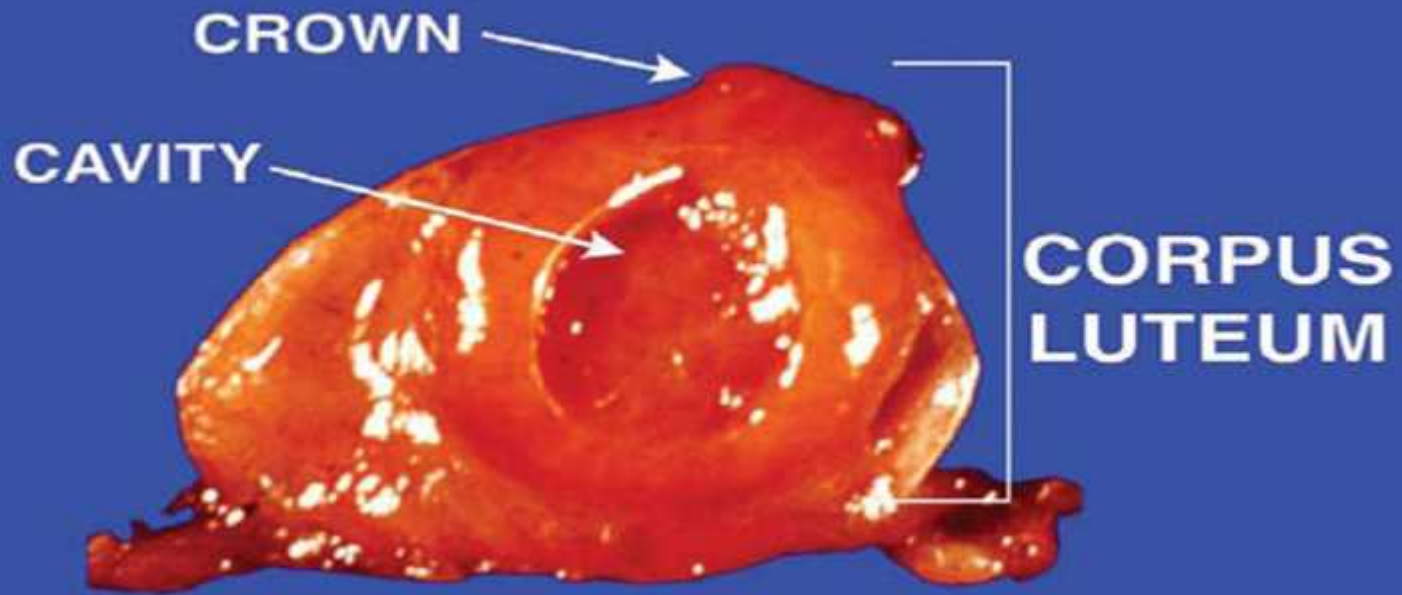
Corpora lutea – size and age

Presence of ovarian cysts – size and possible type.

Ultrasonographic evaluation of genital system







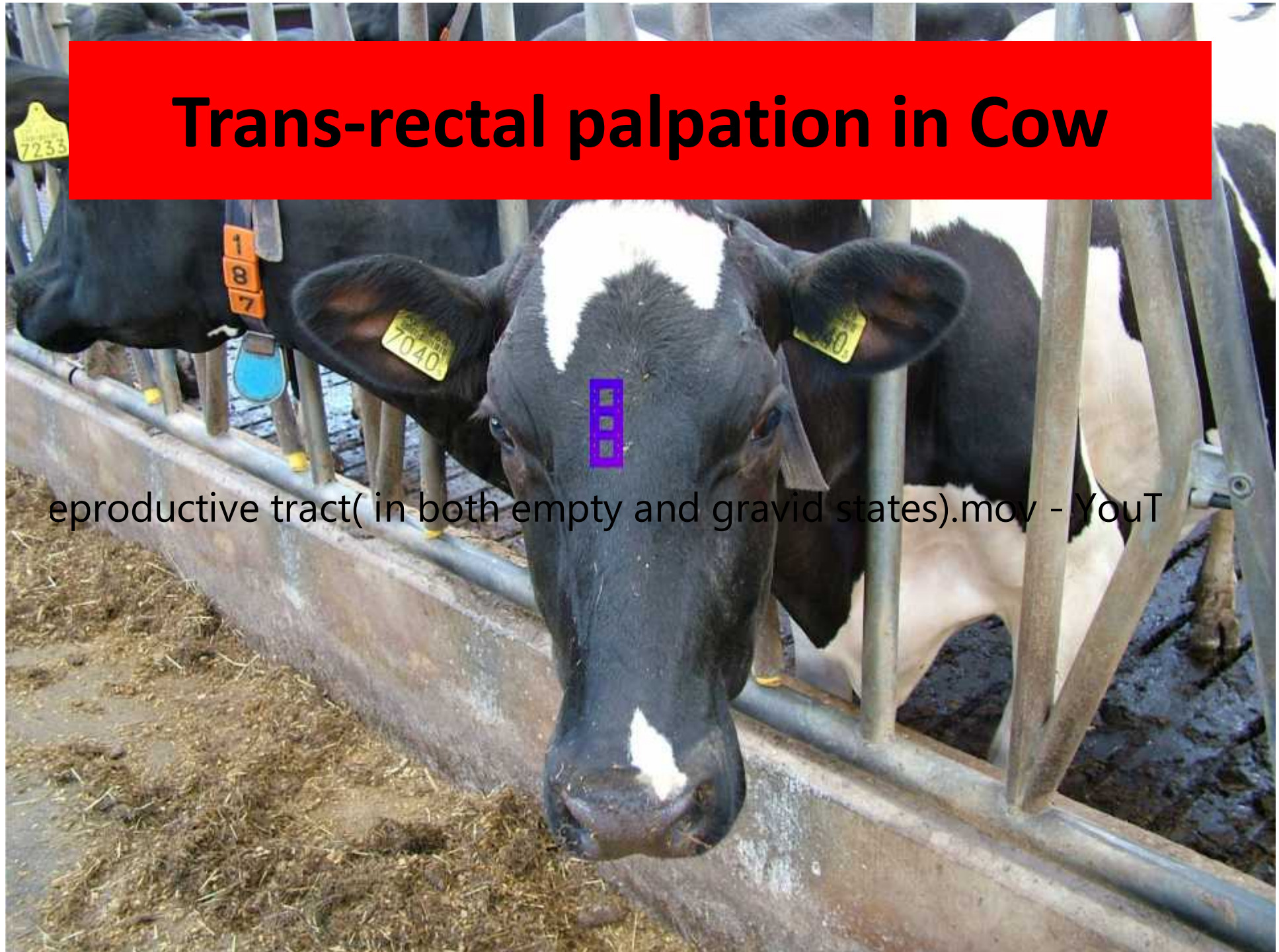


1–Corpus Luteum .

2–Follicle.

4–Posterior pole of the ovary.

Trans-rectal palpation in Cow



eproductive tract(in both empty and gravid states).mov - YouT

TRANS-RECTAL PALPATION IN MARE



Equine trans-rectal palpation - YouTube[via torchbrowser.com].mp4



Bovine-Open (non-pregnant) on Vimeo[[via torchbrowser.com](https://www.torchbrowser.com)].mp4

